

AIN DUBAI



On Bluewater Island in Dubai, there is a huge observation wheel called Ain Dubai, also called the Dubai Eye. Offering amazing views of the city's skyline and the nearby seas, it is one of the biggest and tallest observation wheels in the world. Following is an overview of what visitors to Ain Dubai can often expect as of my most recent update in September 2021:

The Palm Jumeirah, Jumeirah Beach, the Dubai Marina, and the striking skyline of the city are all visible from Ain Dubai's panoramic views of Dubai.

Observation Pods: The observation wheel has air-conditioned, cozy pods that offer a distinctive vantage point to appreciate the beauty of the city. Both seated and standing viewing places are available in each pod.

Experiences during the Day and at Night: You have the option of visiting Ain Dubai during the day to see the city drenched in sunlight or in the evening to enjoy the city's illuminated skyline.

Marvel at Dubai's architectural wonders, such as the Burj Khalifa, Ain Dubai, and the variety of buildings that make up the city's contemporary skyline.

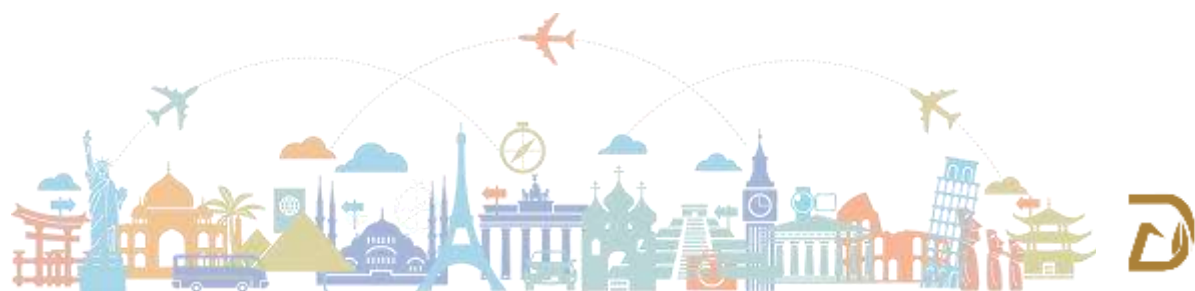
Enjoy a bird's-eye view of Bluewater Island, where Ain Dubai is located, as well as its dining, entertainment, and retail options.

Photo chances: The observation wheel is a popular location for taking memorable pictures because it offers a variety of photo chances.

Culinary Experiences: Some packages may provide dining options in the pods, enabling you to savor a meal or a snack while admiring the scenery.

Bluewater Island is a well-rounded vacation location since it offers a variety of entertainment alternatives, including shopping, restaurants, and leisure activities.

Ain Dubai is a must-see sight for visitors to Dubai since it is a notable landmark and an excellent technical achievement.



DEVOTION

TRAVEL AND TOURISM



<mailto:support@devotiontourism.com>

